

Updated Website & New Sign



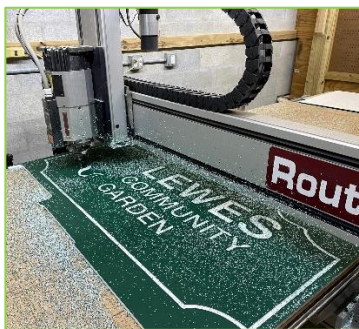
Change is in the air as Lewes Community Garden enters its 5th year. The garden is an all-volunteer organization, providing a space for gardeners who embrace organic gardening practices and want to grow nutritious food and

share extra food with the larger community.

For the 2023 growing season, Lewes Community Garden has added 8 new beds. In addition to 24 returning gardeners, we will welcome 22 new gardeners. The expansion is part of our 2-year strategic plan.

We are very excited to unveil our new LCG website. Community donations and membership fees funded the refresh to the design, navigation, and content. The goal was to make the site easier to use, more visually appealing, and more mobile friendly. The website team (Chris Noonan Sturm, Barbee Kiker and Ray Fratella) worked in collaboration with Techno Goober, a local technology support company. Our online home is [lewescommunitygarden.org](https://www.lewescommunitygarden.org).

As the garden expands, we are proud to unveil a new sign for the garden, which was again made possible through community donations and membership fees. It was recently installed by garden volunteers.



Sign being made



Dan Howard and Gary Stokes helped install



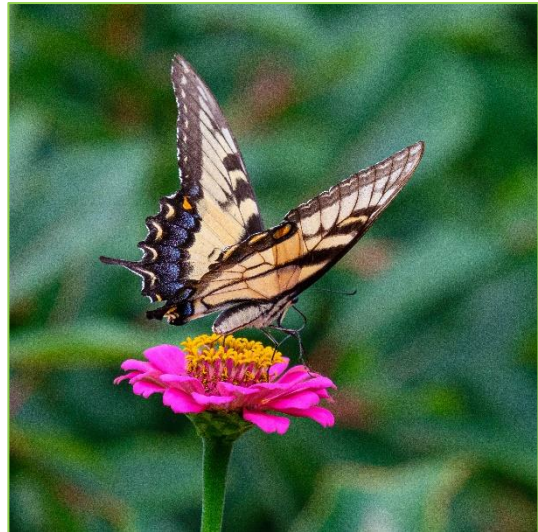
Our new sign

New Pollinator Garden

From Cindy Porter, Master Gardener

We need pollinators for many of our vegetable crops and our pollinators need support. To thrive, we must provide them with food, water, and a place for larva to develop. Not just any food will do! Pollinators evolved with native plant species over thousands of years so native plants provide the food sources our pollinators need. Development continues to reduce the amount of habitat and invasive plants have reduced native plant availability. The links below provide more information:

- [The New Companion Planting: Adding Diversity to the Garden | Cooperative Extension | University of Delaware \(udel.edu\)](#)
- [Liveable Ecosystems: Model for Suburbia | Cooperative Extension | University of Delaware \(udel.edu\)](#)



Swallowtail on Zinnia



Mason Wasp

for the public. LCG volunteers, with guidance from the UDE Master Gardeners, will build and maintain the garden.

In 2021, LCG began a small pollinator garden in a temporary fenced area near the front of the property. The plants are growing well but will soon be shaded by the growing Sassafras trees. Our plan is to expand and move the pollinator garden to a sunny area while also making it more accessible to visitors who want to learn more. We will incorporate a walking path and signage along with more native plant varieties. This also gives us a platform for conducting educational sessions

Pollinator Garden Continued

Our plan:

- We selected a sunny spot on the property that was close to the main garden but not in the way of trucks that deliver materials to site.
- Instead of using chemicals to rid the area of grass and weeds, we have placed cardboard and will be adding several inches of topsoil/compost.
- The bed will be covered this summer to keep weed seeds out.
- The garden will be fenced and gated as time allows during the year.
- In the fall, we will move as many of the pollinator plants to the garden as possible and incorporate new plants.
 - By planting in the fall, we give time for the new soil to mature, the cardboard to decompose, and reduce volunteer time for watering plants.
- The first year, plants need consistent moisture to develop roots.
 - In the second year, plants need watering through long hot/dry periods.
- Once established, most of the plants will thrive without a lot of attention.
- We will also apply for a small grant to help with expenses.



Skipper

As for the old space, the Sassafras trees will continue to grow. For more information on this native, see [Sassafras Tree on the Tree Guide at arborday.org](https://arborday.org/guide/sassafras-tree/). The temporary fence will be removed, and we may consider shade-loving native plants and possibly a bench.

2023 Garden Stats

- 56 total beds
- 24 returning gardeners
- 22 new gardeners and their partners
- 7 volunteers
- 397 pounds of produce donated in 2022

Raising Funds at LCG

Fundraising is the lifeblood of Lewes Community Garden. The funds raised allow us to support our mission, pay expenses, develop educational programs, establish a communication network, and make ongoing improvements benefitting existing gardeners, as well as future gardeners and volunteers.

We have created a fundraising culture from the beginning and have successfully raised over \$50,000 since we broke ground in 2019. Our largest expenditure was the \$14,000 heavy-duty, eight-foot-high deer fence installed in 2022. Other major costs have included 56 raised 8' x 4' beds, topsoil and compost fill, a watering system, a garden shed with tools, a communication system, as well as miscellaneous items, such as our garden sign, bulletin board, picnic tables and benches.

Donations are always welcome to sustain, improve and expand our garden and its outreach programs. Donations are accepted online at [Donate – Lewes Community Garden](#) and checks can be sent to the Lewes Community Garden Fund, P.O. Box 436, Lewes, DE 19958.

Tick Management

How do we handle ticks in an organic garden? At Lewes Community Garden tick management is part of our overall Integrated Pest Management program. We have a multi-pronged approach to ticks.

1. Landscape management
 - a. Minimize grass and keep it cut low
 - b. Use wood chips around the garden beds and perimeter fence
2. Target ticks on mice with tick tubes
 - a. Cardboard or PVC tubes
 - b. Stuff cotton infused with permethrin into tubes in the spring and late summer
 - c. Mice carry cotton back to nests
 - i. The mice are not harmed
 - ii. The ticks are killed without harming other insects or pollinators
3. Treat clothes
 - a. Treat garden clothing (socks, shoes, bottoms of pants) with permethrin
 - b. Effective after it dries and lasts for multiple washings
 - c. Spray clothes away from plants and insects



New Beneficiary

In 2022 we began donating non-perishable snacks and breakfast items to the Westside New Beginnings Youth Center Day camp in Rehoboth Beach. See [\(20+\) West Side New Beginnings, INC. | Rehoboth Beach DE | Facebook](#).



Volunteer Silvia Ritchie organized and delivered the donations!

LCG Adopts First Strategic Plan

In December 2022 the LCG Steering Committee adopted a two-year Strategic Plan that guides the organization through 2023 and 2024. The plan has three goals:

- Create a sustainable organization.
- Educate gardeners and volunteers about ecological, organic gardening practices.
- Provide gardening opportunities for all ages and abilities.

Each goal has one to four objectives and activities defining the work that needs to be done to meet each objective. Each goal also has performance measures with deadlines, person responsible, and a status update.

Objectives for 2023 include expanding the number of garden beds, creating a new Gardener Engagement Policy, developing a plan for the grounds outside the fence (including relocating the pollinator garden), and drafting a manual to document how the garden operates and is managed.

The Steering Committee reviews the Strategic Plan and performance measures quarterly and will modify the plan as needed. Work on updating the plan for the next two-year period begins in 2024. Thanks to the members of the garden's Planning and Strategy Committee for guiding us through this process.

New Kiosk Bulletin Board in Pictures



Jane Stokes, Dan Howard & Gary Stokes



Ray Fratella, Barbee Kiker, Deb Fratella & Linda Foster



Kiosk Complete

Donations always welcome:
Lewes Community Gardeners Fund
PO Box 436
Lewes, Delaware 19958



LewesCommunityGarden@gmail.com

Website - [Lewes Community Garden – Building a Stronger & Greener Community](#)